

# Line Thermal Printer Mechanisms

● LT1220 and BD2-1220U are still available



## LT2220



- 58mm paper width
- 24V operation
- 150mm/sec high-speed printing
- Thick paper up to 0.15mm (LT2220A)
- Compact design

### Accessories

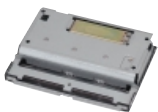
#### Control board



BD2-2220

Interface	Parallel (IEEE1284), Serial (RS-232C), USB
Number of columns	36/48
Font	Font A: 12 × 24 dots / Font B: 9 × 24 dots / font C: 8 × 16 dots
Command set	ESC/POS
Barcode	Supported
Firmware location	Flash memory
Buffer	4k bytes / 45 bytes
Supporting devices	Auto cutter, Paper sensor, Head-up sensor, LF switch, Error LED, Paper out LED
Dimensions(W×D)	90 × 65mm
Source voltage	5.0V ±5% and 24V ±5%

#### Auto cutter



ACS-225

Cutting method	Slide cutting
Paper width thickness	45 — 69mm 0.06 — 0.15mm
Max. cutting frequency	20 cuts/min
Voltage	24V ±10%
Current (peak)	0.8A
Operating temperature	0 — 45°C
Size	80 × 55.7 × 15mm
Weight	140g
Reliability	500,000 cuts
Number of tab left	Full cut blade type: None Partial cut blade type: None or 1 tab

### Specifications

Printing method	Line thermal dot printing	
Total dots	432 dots/lines	
Dot density	8 dots/mm	
Printing width	54mm	
Printing speed	Max. 150mm /sec (1,200 dot-lines/sec)	
Paper feeding pitch	0.125mm	
Sensors	Head temperature	Thermistor
	Paper presence	Photo-sensor
	Head-up	Photo-sensor
Voltage range	VH	DC 21.6 — 26.4V
	Vdd	DC 4.75 — 5.25V
Current consumption	Head (Vp = 5V)	Max. Approx. 5.2A
	Motor (Vp = 5V)	Max. Approx. 0.41A
Recommended paper	Width	58mm
	Thickness	60 – 105µm (Standard), 110 – 150µm (A type)
Reliability	Paper (Manufacturer)	TF50KS-E2D (Nippon Paper) etc.
	Head pulse-resistance	50,000,000 pulses or more
Environment	Head wear-resistance	50km or more
	Operation	Temperature: 0 ~ 45°C Humidity: 35 ~ 85% RH
	Storage	Temperature: -20 ~ 60°C Humidity: 10 ~ 90% RH
External dimensions (W × D × H)	91.5 × 58 × 20mm	
Weight	Approx. 87g	

## LT2320



- 80mm paper width
- 24V operation
- 150mm/sec high-speed printing
- Thick paper up to 0.15mm (LT2320A)
- Compact design

● LT1320 and BD2-1220U are still available



### Accessories

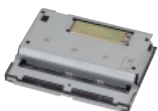
#### Control board



BD2-2221

Interface	Parallel (IEEE1284), Serial (RS-232C), USB
Number of columns	36/48
Font	Font A: 12 × 24 dots / Font B: 9 × 24 dots / font C: 8 × 16 dots
Command set	ESC/POS
Barcode	Supported
Firmware location	Flash memory
Buffer	4k bytes / 45 bytes
Supporting devices	Auto cutter, Paper sensor, Head-up sensor, LF switch, Error LED, Paper out LED
Dimensions(W×D)	90 × 65mm
Source voltage	5.0V ±5% and 24V ±5%

#### Auto cutter



ACS-235

Cutting method	Slide cutting
Paper width thickness	50 — 89mm 0.06 — 0.15mm
Max. cutting frequency	20 cuts/min
Voltage	24V ±10%
Current (peak)	0.8A
Operating temperature	0 — 45°C
Size	102 × 55.7 × 15mm
Weight	180g
Reliability	500,000 cuts
Number of tab left	Full cut blade type: None Partial cut blade type: None or 1 tab



Example for KIOSK unit

### Specifications

Printing method	Line thermal dot printing	
Total dots	576 dots/lines	
Dot density	8 dots/mm	
Printing width	72mm	
Printing speed	Max. 150mm /sec (1,200 dot-lines/sec)	
Paper feeding pitch	0.125mm	
Sensors	Head temperature	Thermistor
	Paper presence	Photo-sensor
	Head-up	Photo-sensor
Voltage range	VH	DC 21.6 — 26.4V
	Vdd	DC 4.75 — 5.25V
Current consumption	Head (Vp = 5V)	Max. Approx. 5.2A
	Motor (Vp = 5V)	Max. Approx. 0.41A
Recommended paper	Width	80 mm
	Thickness	60 – 105µm (Standard), 110 – 150µm (A type)
Reliability	Paper (Manufacturer)	TF50KS-E2D (Nippon Paper) etc.
	Head pulse-resistance	50,000,000 pulses or more
Environment	Head wear-resistance	50km or more
	Operation	Temperature: 0 ~ 45°C Humidity: 35 ~ 85% RH
	Storage	Temperature: -20 ~ 60°C Humidity: 10 ~ 90% RH
External dimensions (W × D × H)	108 × 58 × 20mm	
Weight	Approx. 99g	

### Type Classification

LT2220HA

1) 2) 3) 4) 5) 6)

#### 1) Printing speed

- 1: 80mm/sec
- 2: 150mm/sec

#### 2) Paper width

- 2: 2inch
- 3: 3inch

#### 3) Voltage

- 2: 24V

#### 4) Type

- 0: Standard

#### 5) Paper path

- H: Curl
- V: Straight

#### 6) Paper thickness

- None: Standard (60-105µm)
- A: For thick paper (110-150µm)

BD2-2220RSU

1) 2)

#### 1) Applicable Mechanisms

- 0: LT2×20
- 1: LT2×21

#### 2) Interface

- PA: Parallel
- UB: USB
- RS: Serial RS-232C