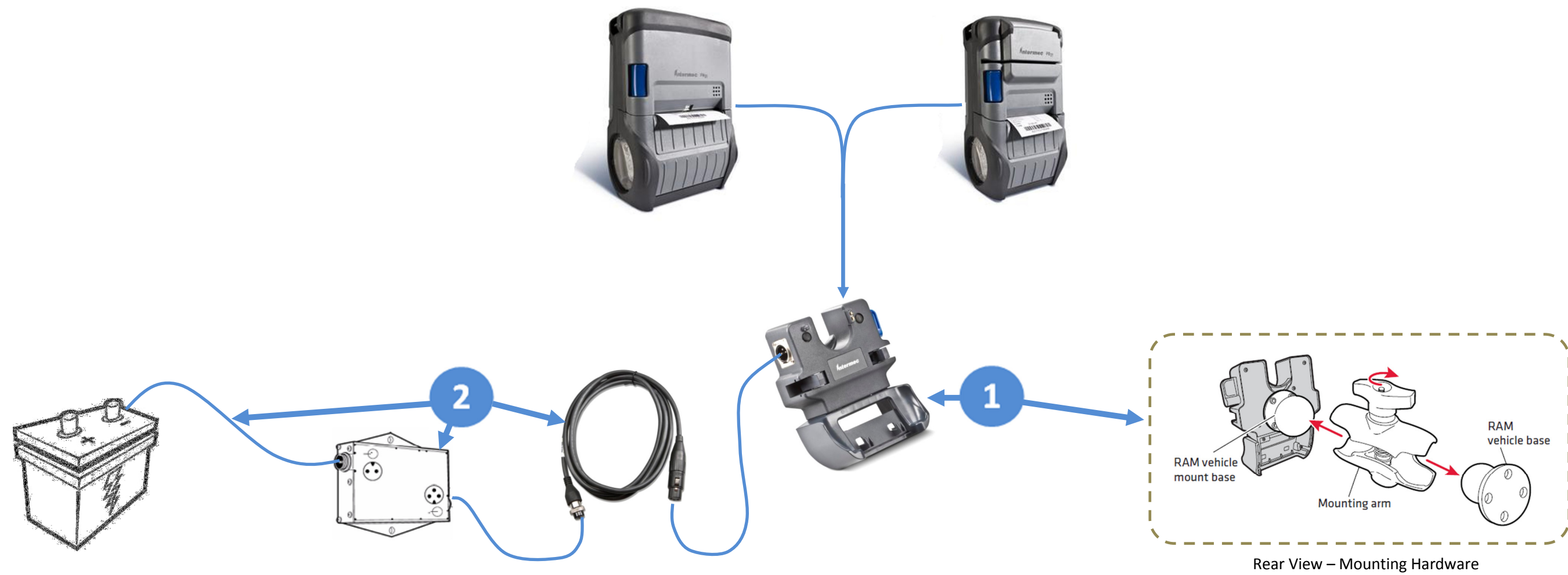


PB21/22/31/32 Vehicle Charging

Option 1 - Fixed Vehicle Install with DC/DC Converter

Best used when the vehicle input voltage varies, 12, 24, 36, 48V.



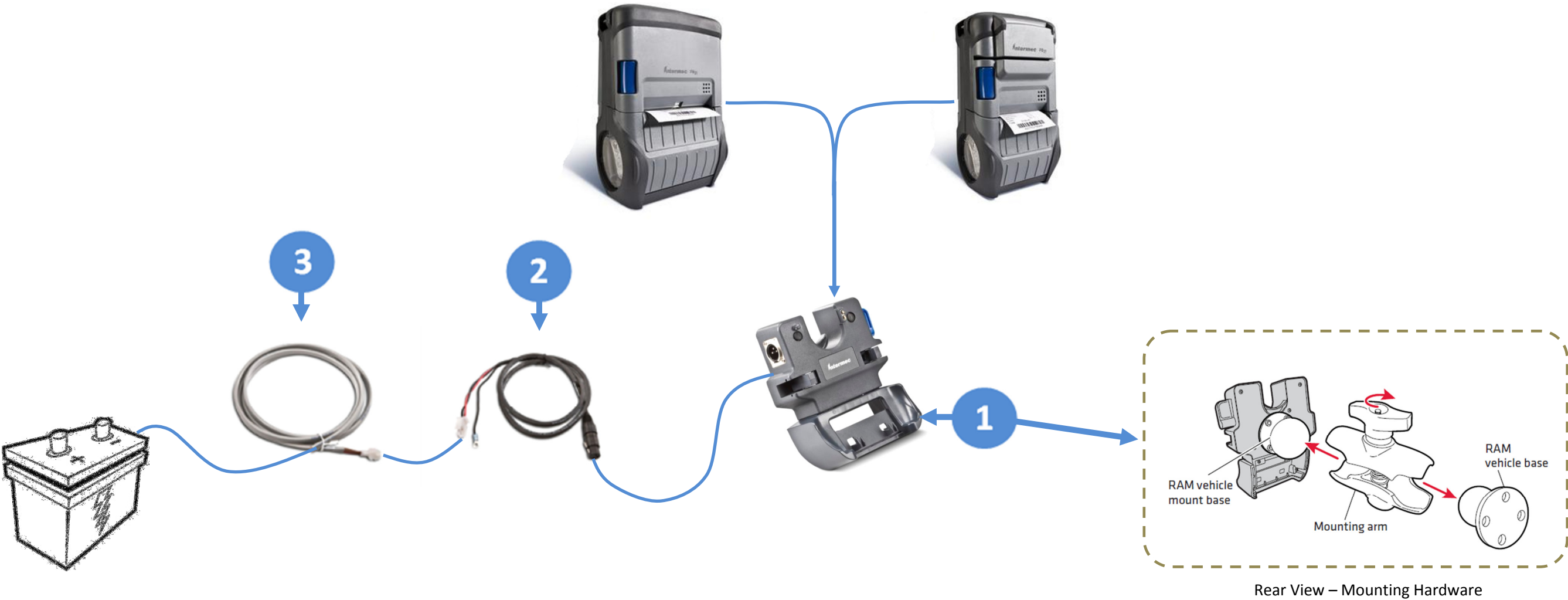
|   | Part Number | Description   |
|---|-------------|---|
| 1 | 203-896-001 | Vehicle Mount, AV14, PB3x & PB2x (Includes RAM Mounting Hardware)     |
| 2 | 203-880-002 | Kit, PB50/PW50 forklift installation (Includes 6-60V DC/DC Converter) |

**Note:** The vehicle cradle comes configured for use with the model PB31 and PB32 printers. If you are using a model PB21 or PB22 printer, you will need to remove the PB31/PB32 base and install the PB21/PB22 base.

PB21/22/31/32 Vehicle Charging

Option 2 - Fixed Vehicle Install with 12V Input

Recommended for constant 12V input power only.



|    | Part Number | Description   |
|----|-------------|---|
| 1  | 203-896-001 | Vehicle Mount, AV14, PB3x & PB2x (Includes RAM Mounting Hardware)   |
| 2  | 226-215-101 | Cable, DC power, 4' RoHS  |
| OR | 226-215-102 | Cable, DC power, 4' , Right Angle RoHS (The plug that inserts into the Vehicle Dock is a right angle connector) |
| 3  | 206-875-102 | Cable, Truck Power, 8' RoHS   |
| OR | 206-875-106 | Cable, Truck Power, 16' RoHS  |
| OR | 206-875-109 | Cable, Truck Power, 22' RoHS  |

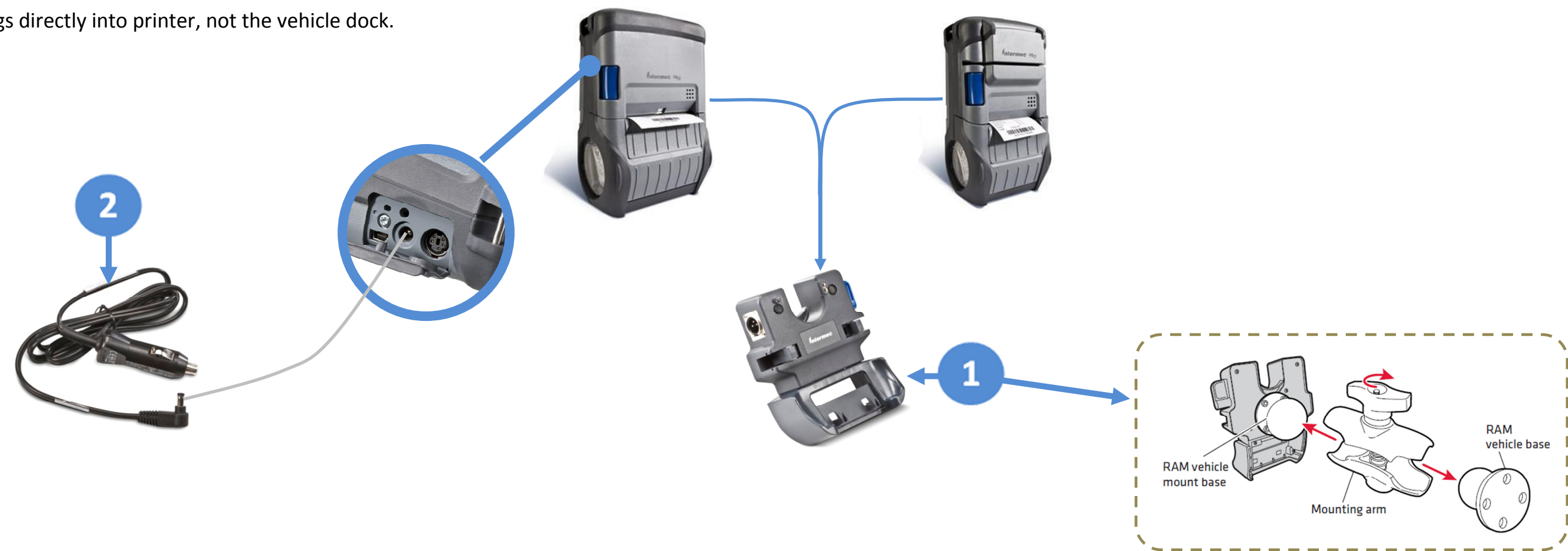
**Note:** The vehicle cradle comes configured for use with the model PB31 and PB32 printers. If you are using a model PB21 or PB22 printer, you will need to remove the PB31/PB32 base and install the PB21/PB22 base.

PB21/22/31/32 Vehicle Charging

Option 3 - Fixed Vehicle Install with Power Adapter

Operates from Vehicle Cigarette Lighter Power Source

Power plugs directly into printer, not the vehicle dock.



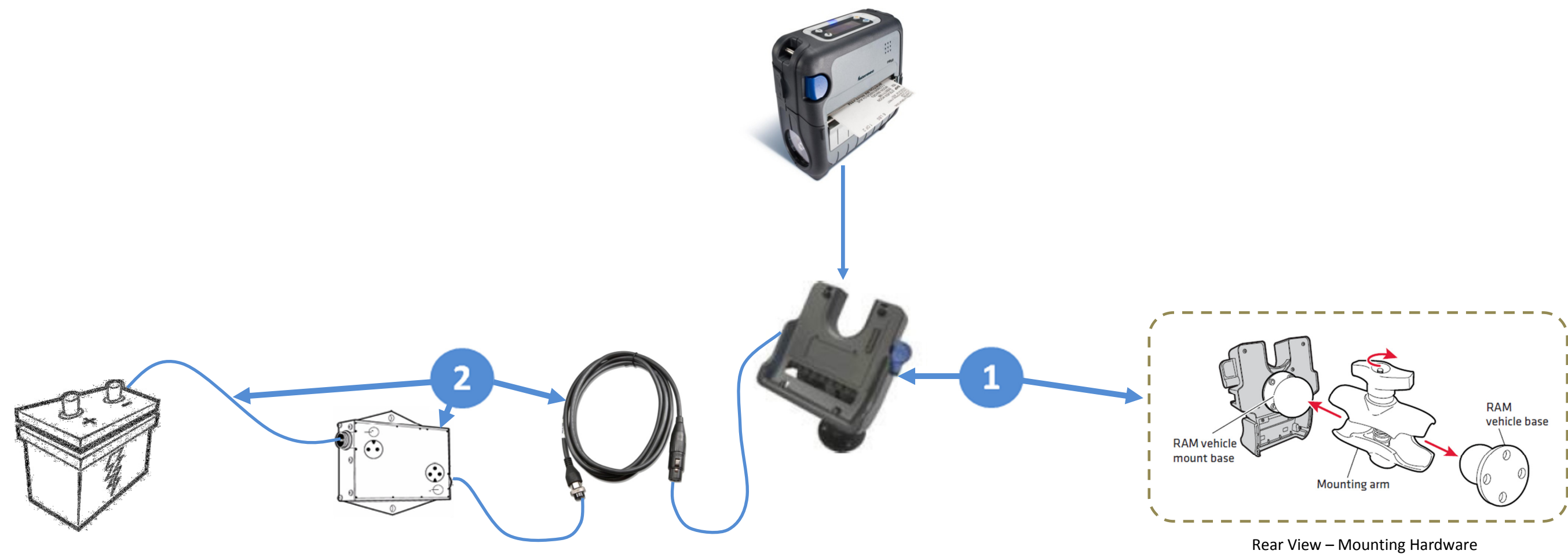
|   | Part Number | Description   |
|---|-------------|---|
| 1 | 203-896-001 | Vehicle Mount, AV14, PB3x & PB2x (Includes RAM Mounting Hardware) |
| 2 | 074866      | Adapter, Cigarette Lighter, PB42/2x/3x/5x RoHS                    |

**Note:** The vehicle cradle comes configured for use with the model PB31 and PB32 printers. If you are using a model PB21 or PB22 printer, you will need to remove the PB31/PB32 base and install the PB21/PB22 base.

PB50/51 Vehicle Charging

Option 1 - Fixed Vehicle Install with DC/DC Converter

Best used when the vehicle input voltage varies, 12, 24, 36, 48V.



|   | Part Number | Description   |
|---|-------------|---|
| 1 | 225-740-002 | Vehicle Dock, PB5x (Includes RAM Mounting Hardware)                   |
| 2 | 203-880-002 | Kit, PB50/PW50 forklift installation (Includes 6-60V DC/DC Converter) |

PB50/51 Vehicle Charging

Option 2 - Fixed Vehicle Install with 12V Input

Recommended for constant 12V input power only.



|    | Part Number | Description   |
|----|-------------|---|
| 1  | 225-740-002 | Vehicle Dock, PB5x (Includes RAM Mounting Hardware)   |
| 2  | 226-215-101 | Cable, DC power, 4' RoHS  |
| OR | 226-215-102 | Cable, DC power, 4' , Right Angle RoHS (The plug that inserts into the Vehicle Dock is a right angle connector) |
| 3  | 206-875-102 | Cable, Truck Power, 8' RoHS   |
| OR | 206-875-106 | Cable, Truck Power, 16' RoHS  |
| OR | 206-875-109 | Cable, Truck Power, 22' RoHS  |

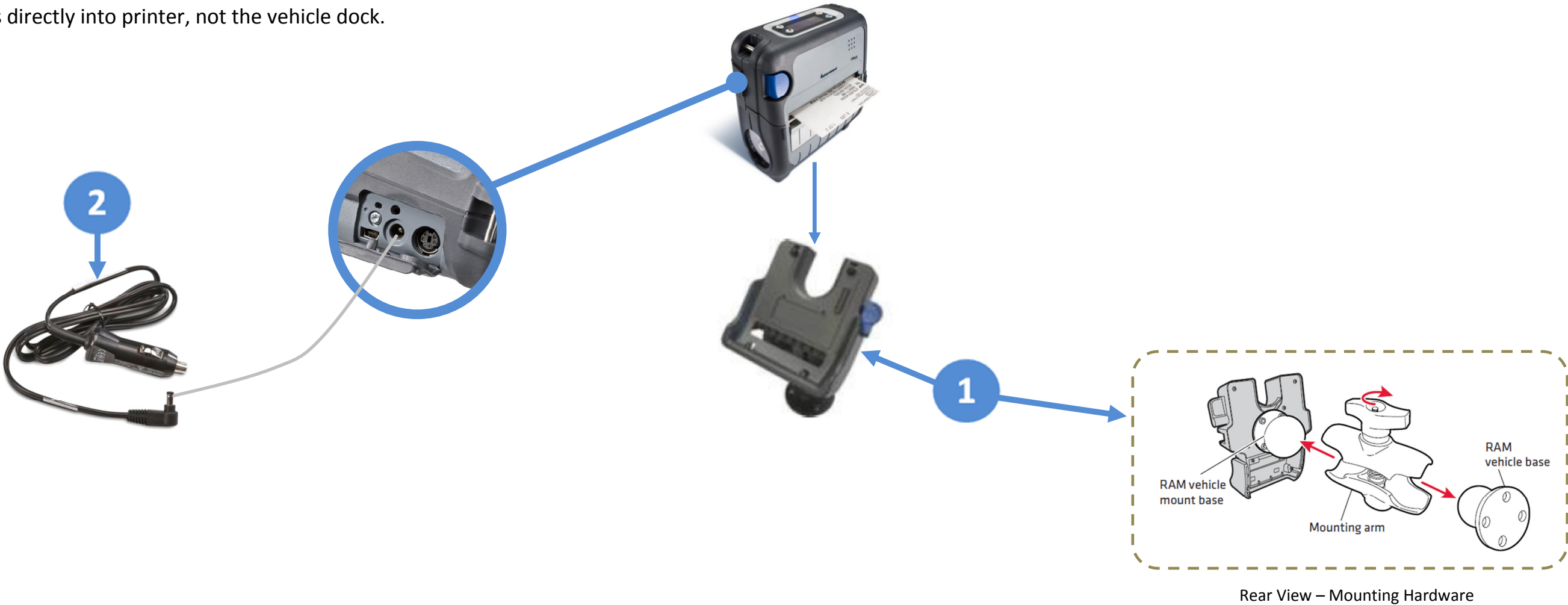


PB50/51 Vehicle Charging

Option 3 - Fixed Vehicle Install with Power Adapter

Operates from Vehicle Cigarette Lighter Power Source

Power plugs directly into printer, not the vehicle dock.



|   | Part Number | Description   |
|---|-------------|---|
| 1 | 225-740-002 | Vehicle Dock, PB5x (Includes RAM Mounting Hardware) |
| 2 | 074866      | Adapter, Cigarette Lighter, PB42/2x/3x/5x RoHS      |