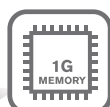




9600 series

Industrial Mobile Computer

Designed for demanding mobile applications, the 9600 series delivers the optimal combination of fast data capture, easy information access, usability, and powerful processing in a single, lightweight mobile computer.



9600 series

Industrial Mobile Computer



The Perfect Companion in the Field

Now you can reliably capture and retrieve the critical information needed in the field. Both Cisco® CCX-compatible WLAN and GSM/GPRS/EDGE communications let you upload and download data nearly anywhere. 1D or 2D, RFID, signature capture, digital camera, and massive storage capacity let you document more and maintain company records in a wide range of formats. The bright display supports graphical business and user applications to help you make more intelligent decisions for your customers and your company. GPS-ready, the 9600 can help you locate your customers wherever they are to keep your deliveries and service calls on track and on schedule.

Your Information Source on the Floor

Your Windows®-based retail applications are stronger than ever. Supported by a powerful processor and graphical display, multiple AIDC capabilities, multi-modal communications (WWAN, WPAN, plus Cisco® CCX V4-compatible WLAN), the 9600 series makes it easier than ever to manage and track products—and even process sales. Whether on the sales floor or in a delivery truck, you can easily and reliably scan and update inventory, take orders, capture signatures, and send replenishment data across the room or around the world.

Proven Use Cases using CipherLab PDA industrial mobile computers

Reduce Asset Management Burden

Wens Food Group
Livestock Management



Running standard quality auditing software on Windows® CE-based CipherLab industrial mobile computers, Wens Food Group extends their software tools to the field. With Windows®-based CipherLab devices, managers eliminate cumbersome paper-based procedures while accelerating inspections, saving time, and cutting costs.

Improve Utility Efficiencies

GuiYang Power Company
*Power Services
Metering and Billing*



With Windows® CE-based CipherLab industrial mobile computers, GuiYang Power Company eliminates human errors and accelerates their revenue stream. Using CipherLab devices equipped with RFID, WWAN, BT, and a magnetic slot reader, remote workers read power meters, connect to the central office, and collect payments on site.

Accelerate Postal Activities

ECT
Brazil National Post Office
Public Service



By deploying thousands of wireless CipherLab devices to its service centers, ECT is able to ensure accuracy in package tracking, accelerate deliveries, and enhance customer service around the country. Wireless communication lets them instantly maintain data accuracy, while shortening busy lines.

Limitless Applications

CipherLab's SDK enables you to develop enhanced business applications and easily extend your existing programs to the point of work.



Forge application generators build custom applications unique to your business.



Mirror browsers and terminal emulators extending complex mainframe applications to CipherLab devices.

Industry-standard third-party applications add even more.

- ▶ **Naurtech** CETerm Industrial Browser and Terminal Emulators are SAP-compatible for legacy main-frame integration.
- ▶ **SOTI**® Mobicontrol eases the challenges of managing mobile devices in the field remotely.



Our Most Powerful Industrial Mobile Computer for Field Service and Sales

We've combined all the right technologies into the 9600 with an ergonomic design to help make field and office personnel more productive throughout the day.

DATA MANAGEMENT

The 9600 can read 1D or 2D codes with your choice of linear imager, 2D imager or laser options. With built-in RFID reader/writer, signature capture, VGA touch screen, 2-megapixel digital camera with LED flash, and 29-key keypad, the 9600 series provides multiform data input for maximum efficiency.

INTEGRATED GPS AND ADVANCED WLAN

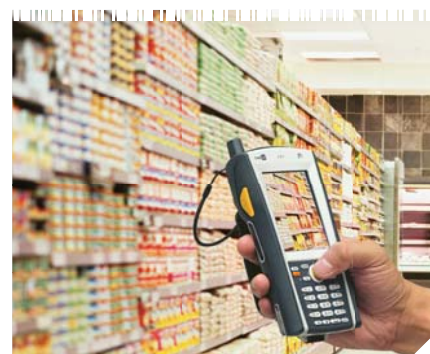
Field service and sales now is made simple, anywhere, with built-in quad-band EDGE and integrated GPS. The 9600 series, equipped with CCX V4-compatible Summit® WLAN modules, gives you reliable, advanced wireless communications. If your current network is built on Cisco® wireless communications, you can extend Cisco® features currently used to the 9600 units for a more advanced data capture infrastructure.

BUILT STRONG

On the sales floor, in the warehouse, or in the field—indoors and outside—the 9600 is designed to stand up to the most extreme environments and toughest working conditions. It's been tested with repeated 1.5-meter drops onto concrete, tumbled 1,000 times from a 100-cm height, exposed to temperatures from -10 to 50° C with up to 95% humidity, and meets IP64 specifications.

PERFECT FOR DEMANDING, ENTERPRISE-WIDE SYSTEM SOLUTIONS

Designed around XScale® technology, Marvell's PXA270 embedded processor, and Windows® embedded CE operating system, the 9600 series delivers high-performance computing power with graphical multimedia, yet is incredibly energy efficient. Its large, on-board 1GB memory with microSD slot for up to 16GB maximizes flexibility and scalability for enterprise-wide solutions.



FEATURES	BENEFITS
Powerful computing and industry-standard Windows® CE operating system	Deploy a wide range of advanced, graphical applications to energize your business
Field-ready, multi-modal communications, plus GPS	Do business anywhere in real time
Meets strict and tough environmental testing	Reliable operation to keep your business going
CipherLab and Windows® SDKs	Extend your business tools with custom applications

CIPHERLAB PRODUCTS ARE VALUED WORLDWIDE FOR ENGINEERING EXCELLENCE.

THE 9600 SERIES
IS ANOTHER EXAMPLE OF
TECHNICAL INNOVATION AND
QUALITY VALUE FOR TODAY'S
AIDC SOLUTIONS.

SPECIFICATIONS

9600 series

Industrial Mobile Computer



ACCESSORIES



Charging and Communication Cradle



Protective Cover



Pistol Grip



Belt Holster



Vehicle Cradle



Vehicle Charger



4-Slot Battery Charger

		9600	9670	9680	9690
Performance	Operating system	Microsoft® Windows® CE 6.0			
	CPU	XScale™ PXA270 @ 520 MHz			
	Memory	1GB Flash ROM / 128MB SDRAM			
	Expansion	microSD slot for up to 16GB			
	Operating power	Rechargeable 3.7V 2700 mAh Li-ion battery			
		Adapter: AC 110V / 220V input, DC 5V / 3 A			
	Working hours¹	12 hours batch mode / 10 hours WLAN mode / 10 hours GSM talk time			
	Backup power	3.7V 80 mAh lithium battery Data retained for 24 hours minimum without main battery			
Alerts	Audio speaker / Buzzer / Vibrator / Tri-color LEDs				
Wireless communication	WLAN 300 m line of sight²	--	IEEE 802.11 b/g Cisco® CCX V4	--	IEEE 802.11 b/g Cisco® CCX V4
	WLAN Security	--	EAP, WEP, WPA(PSK,TKIP), WPA2(AES, PSK), 802.1X	--	EAP, WEP, WPA(PSK,TKIP), WPA2(AES, PSK), 802.1X
	WPAN	BT Class 2 compliance			
	WWAN	--		GSM/GPRS/EDGE Quad-band	
	GPS⁴	GPS SiRFstar III, integrated GPS antenna			
Data capture	Barcode scanning	Linear imager⁴ / Laser / 2D imager			
	RFID⁴ read/write	13.56 MHz frequency Supported tags: ISO 14443A, ISO 14443B, ISO 15693			
	Digital camera	2 megapixels CMOS with LED flash			
Physical characteristics	Display	3.5" color VGA or QVGA, TFT transfective, touch screen, LED backlit			
	Keypad	29 numeric keys LED backlit keys			
	LED	Green, red, blue tri-color			
	Size L x W x H Weight	170 x 90 x 38 mm / 6.7 x 3.5 x 1.5 in. 400 g / 14.1 oz. configuration dependent			
User environment	Temperature	operating: -10° to 50°C / 14° to 122°F storage: -20° to 60°C / -4° to 140°F			
	Humidity	5% to 95% non-condensing			
	Impact resistance	Multiple 1.5 m / 5 ft. drops onto concrete, 5 drops/face 1,000 tumbles at 100 cm IP64			
	Electrostatic discharge	±15 kV air discharge / ±8 kV direct discharge			
	Regulatory³	BSMI, CE, C-Tick, FCC, IC, MII, NCC, SRMC, CCC			
Development support	CipherLab C++/.NET DLL, 9600 SDK to support Microsoft® Visual Studio 2005, Microsoft® Visual Studio 2008				
Application software	Application Manager, Backup Utility, Reader Configuration Utility, FORGE Batch Application Generator, MIRROR Browser and Terminal Emulator, Naurtech CETerm Browser and Terminal Emulator, SOTI® MobiControl				
Cradles	USB and RS232 cradle / Ethernet cradle / Vehicle cradle				
Accessories	4-slot battery charger, vehicle charger, belt holster, protective cover, pistol grip, hand strap, rechargeable battery pack				
Warranty	1 year				

¹ Working hours for batch and WLAN are based on one standard laser scan per five seconds with backlight on. The working time for GSM mode is based on continuous talking.

² Effective coverage depends on user environment and equipment deployment. It is highly recommended to conduct a site survey before actual deployment.

³ For countries outside USA, Canada, European Economic Area, Australia, Taiwan, and China, consult your local CipherLab representative.

⁴ GPS cannot be used with RFID and linear imager scanning due to hardware limitation.

©2010 CipherLab Co., Ltd. All specifications are subject to change without notice. All rights reserved. All brand, product and service, and trademark names are the property of their registered owners.



HEADQUARTERS
CipherLab Co., Ltd.
 12F, 333 Dunhua S. Rd., Sec. 2
 Taipei, Taiwan 10669
Tel +886 2 8647 1166
Fax +886 2 8732 3300
www.cipherlab.com

CipherLab China
 Suite 1305, 1065A, Jaojiabang Rd.
 Xuhui District, Shanghai,
 China 200030
Tel +86 21 3368 0288
Fax +86 21 3368 0286

CipherLab USA
 2552 Summit Avenue
 Plano, Texas USA 75074
Tel +1 469 241 9779
Toll Free 888 300 9779
Fax +1 469 241 0697

CipherLab Central Europe
 Willicher Damm 143-145
 41066 Mönchengladbach
 Germany
Tel +49 2161 56230 0
Fax +49 2161 56230 22